

JOIN & GET INVOLVED

Would you like to play a more active role at the Canadian Clay & Glass Gallery and meet others who share your interests? Join one of the following categories of Gallery supporter today. For more details on any of these programs contact Suzanne Ronald, Director of Development at 519.746.1882, ext. 227 or email development@canadianclayandglass.ca

JOIN AS A MEMBER

CCGG Membership is your declaration that the arts make a difference in your life. An enhanced Gallery Membership program offers opportunities to receive priority invitations and discounts on exceptional social and cultural events. Save 10% on your Gift Shop purchases, 20% on education programs and, most importantly, help art flourish in your community.

JOIN THE BUSINESS CIRCLE

The CCGG Business Circle enables your company to further its philanthropic goals while expanding its marketing efforts in the Waterloo Region. We will assist you to create a comprehensive benefits package that integrates your business objectives into all components of the partnership. This may include invitations to exclusive events, press and promotion, recognition, hospitality, community presence, and customer and employee rewards.

BUSINESS CIRCLE 2005

CORPORATE BENEFACTOR	BUSINESS PATRON
Spaenaur	Robstar Investments The Walter Fedy Partnership
BUSINESS FELLOW	
Darren Shaw	Greig & Associates
J.J. Barnicke Whitney Ltd.	Suzanne Ronald Consulting
P.E.r.t Creative for the Arts	Achtemichuk
The Pottery Supply House	Rick Forler Construction Inc.

JOIN AS A DONOR

Annual Giving: Gifts to the annual fund touch every area of the Gallery's operation, supporting conservation of the collection, programs for children and youth and curatorial research. Gifts in Honour: Celebrate anniversaries, birthdays, promotions and special occasions by making a gift to the CCGG Annual Fund in the name of a colleague, friend or family member. Recognize those special people around you by making a meaningful gift in their honour. Gifts in Memory: Remember loved ones through a memorial gift. Recognize their appreciation for the arts during their lifetime with a gift to the CCGG Annual Fund in their memory.

JOIN AS A VOLUNTEER

Work and learn about the Gallery in a variety of behind-the-scenes environments while networking with people who share a passion for the silica arts. From planning, implementing and executing the CCGG's hottest special events, to meaningful responsibilities as educational docents, CCGG's valued volunteers are critical to the efforts to achieve and maintain the mission of the Gallery. Contact William Hlowatzki at 519.746.1882.

GALLERY SERVICES

The Gallery is pleased to offer the following services to the public and its members:

Contact: Jennifer DeBruyne, ext. 222 / jen@canadianclayandglass.ca

BRIDAL REGISTRY

Take advantage of our Bridal Registry program and receive 10% off attendants' gifts! We offer an interesting alternative to the traditional Bridal Registry. Representing over 500 artists from across Canada, our knowledgeable staff can help you select unique pieces for your home, both functional and decorative.

FACILITY RENTAL

Recognized as one of Canada's most spectacular architectural buildings, the Gallery offers a fabulous venue for your corporate, public, or private event. Call us to arrange a tour of the facility or place a reservation.

CORPORATE GIFTS

Recognize your employees or thank your customers with a gift from the Canadian Clay & Glass Gallery. From one-of-a-kind works of art to company-branded items, we offer a unique alternative to more traditional gift-giving ideas.

CONTACT US

For questions, comments, suggestions, or to arrange a donation, the staff of the Gallery can be reached via the following contact information:

- Telephone: 519.746.1882 / Fax: 519.746.6396
- Address: 25 Caroline Street North, Waterloo, Ontario, N2L 2Y5
- Web site: www.canadianclayandglass.ca
- E-mail: info@canadianclayandglass.ca
- Hours of Operation
Monday: Closed
Tuesday-Saturday: 10am - 5pm
Sunday: 1-5pm

STAFF DIRECTORY

- Robert Achtemichuk, *Executive Director*, ext. 231 / robert@canadianclayandglass.ca
- Virginia Eichhorn, *Curator*, ext. 230 / virginia@canadianclayandglass.ca
- Suzanne Ronald, *Director of Development*, ext. 227 / development@canadianclayandglass.ca
- Sheila McMath, *Educator*, ext. 221 / sheila@canadianclayandglass.ca
- Kate Holt, *Marketing Manager*, ext. 234 / kate@canadianclayandglass.ca
- Jennifer DeBruyne, *Retail Manager*, ext. 222 / jen@canadianclayandglass.ca
- Louise Maree, *Retail Associate*, ext. 222.
- William Hlowatzki, *Public Relations & Visitor Event Coordinator*, ext. 224 / reception@canadianclayandglass.ca
- Charmayne Grieg, *Bookkeeper*, ext. 229 / charmayne@canadianclayandglass.ca

Editor: Barbara Yeaman *Design and Layout:* nellydog7 *Photos:* Wilhelm Nassau

OUR SPONSORS:



- Waterloo Regional Arts Fund
- Ontario Ministry of Culture - Cultural Strategic Investment Fund

CHARITABLE NUMBER: 11883 0256 RR0001



DECEMBER 2005 | VOL. 8

THE SPIRAL

CANADIAN CLAY & GLASS GALLERY | *Quarterly Newsletter*

WHAT'S INSIDE

ARTIST SPOTLIGHT

- Wheel of Time - Historical & Contemporary Buddhist Art & Artefacts
- Layers - Peter Sloan

EXHIBITS & EVENTS CALENDAR

SPECIAL EVENTS

- Pretty in Pink - Wine Gala

PERMANENT COLLECTION PROFILE

- Lorne Beug

EDUCATION PROGRAMS

DONOR PROFILE

JOIN & GET INVOLVED

- Join as a Member
- Join the Business Circle
- Business Circle 2005
- Join as a Donor
- Join as a Volunteer

GALLERY SERVICES

- Bridal Registry
- Facility Rental
- Corporate Gifts & Awards

CONTACT US

- General Information
- Hours of Operation
- Staff Directory

SPONSORS

WHEEL OF TIME:

HISTORICAL & CONTEMPORARY BUDDHIST ART & ARTEFACTS

The Wheel of Time - an incredibly important exhibition within the Gallery's history - was a project which took four years to realize. The cooperation, support and collegial hard work of many people and organizations from across Canada and the United States made it possible.



Tsa Tsa - possibly Tson-Ka-Pa, Founder of the Yellow Hat Sect
19th C. clay / 3"x3"
Permanent Collection, Art Gallery of Greater Victoria



Tibetan Tantric Demon Quelling Set
19th C. iron / 9"x3.5"x9"
Permanent Collection, Tibet House, New York City

The mandate of the Canadian Clay & Glass Gallery is to foster interaction among artworks, artists and community. The Wheel of Time was a wonderful example of the success of this vision. The Gallery, providing the exhibition and supplemental activities, interacted with members of the local and international Buddhist communities who played significant roles in helping to achieve this exhibition - a truly collaborative effort.

Wheel of Time includes exceptional works of Buddhist art, some from the permanent collections of the Art Gallery of Greater Victoria and Tibet House Museum, New York City.

The mandala created on site by Tenzin Thutop and Lobsang Gyaltzen, monks from Namgyal Monastery in Ithaca, New York, is dedicated to the teaching of compassion - the Sand Mandala of Avalokiteshvara. Avalokiteshvara, or Chenrezig as he is known in Tibetan, is the Buddhist deity who personifies the ideal of compassion. His Holiness the Dalai Lama is believed to be an emanation of this Buddha. The Chenrezig Mandala was designed to bring compassion, acceptance and peace into the world, and to encourage an appreciation for diversity. In a powerful ceremony on October 27, the Mandala was ritually destroyed and the sands dispersed into the nearby waters of Silver Lake.

EXHIBITS & EVENTS CALENDAR

JANUARY 15 - APRIL 2, 2006 *Fragile Nature: Brent Bukowski and Kathryn Ward*

The work of these artists is exhibited in a manner to encourage discourse on the ideas and questions about landscape, nature and culture. Their complementary, but divergent approach, and the contrasting ways in which they incorporate glass, natural and industrial materials ensures a dynamic exhibition. Formally exploring landscape traditions within their works, the artists “frame” aspects of landscape/natural materials with industrial or processed substances. The idea of “landscape”, evolving over time, is frequently thought of as wilderness or the bucolic, pastoral vista celebrated by art and ideology. However, the landscape most often encountered is that of cities and urban environments, so often viewed in a pejorative or demeaning way. Yet nature, seen as the “loser” in the battle of urban sprawl, is tenacious and manages to assert itself even in the midst of the most largely populated cities. This exhibit is a recognition of that achievement. Opening Reception Sunday, January 15 from 2-5:00 p.m. Artist Talk at 1:00 p.m.

JANUARY 15 - APRIL 2, 2006 *LAS FARC DID IT!: Cesar Forero - Master's Thesis Exhibition*

On May 18, 2005, the subversive group “Las Farc” exploded a horse bomb in a plaza; blowing apart the poor animal, the terrorist group destroyed more than twenty homes and the police station. “Fortunately”, no human lives were lost. In July, 2002, another horse bomb in Guadalupe wounded at least eight policemen. A similar event in September, 2003, in Chita, Boyaca, left eight people dead and more than ten wounded. Forero's intent is to show an optimistic position, despite the tragedies that are now a common blight in modern society, by using this drama to transform it into an interactive-dancing narrative presentation. He and a ballet dancer, living sculptures, are integrated within the scene, along with four marionette sculptures. All six characters, masked and disguised, remind one of the illusions of a carnival. The colourful costumes distract viewers from the drama. Further, their dramatic presence reminds one of violent animal parts - shark fins and jaws, rooster spurs, horns and thorns. As in a street performance, a social story is told. The community gets involved, hoping to make of the world a more peaceful and unified place. Opening Reception Sunday, January 15 from 2-5:00 p.m. Performance by Cesar Forero and Michelle Moylan at 3:00 p.m.

JANUARY 15 - APRIL 2, 2006 *PHANTASTIQUE: Karina Guevin*

Karina Guevin creates phantastical objects in glass inspired by the natural world - fish, bones, rocks and plants. Her work is a combination of installation and non-functional sculptural jewellery. Opening Reception Sunday, January 15 from 2-5:00 p.m.

JANUARY 15 - APRIL 2, 2006 *NEON: Scott Silverthorn and Dick Avern*

These two artists create installations in neon that address the language and meaning of art. Avern's work is playful - he creates phrases with multiple meanings such as “Art is an Illuminating Language”. For him, media is the medium. Scott Silverthorn's work has long addressed issues of what makes an art work an art work. Is it the materials, the subject or is it the artist's signature that gives something its value and meaning? Opening Reception Sunday, January 15 from 2-5:00 p.m.



THURSDAY, FEBRUARY 9, 2006 - 6:30 PM

Enjoy premium wines, mouth-watering hors d'oeuvres and wine-tasting workshops at this annual fund-raising event! Premium wines from Canadian and International vineyards will be featured. Hot and cold hors d'oeuvres will be presented by K-W's finest restaurants and caterers. This year's theme, Pretty in Pink, finds its inspiration in the opulent '80s. Wear PINK, decorate your gala attire with PINK accessories, or - for the more adventurous - go all out and embrace the RETRO THEME in full eighties style.

Enjoy wine tasting workshops. Participate in a live auction featuring select vintages. Join in the fun of a Balloon Pop to win prizes donated by local businesses. Delight in a hidden treasures sale of art works created by renowned and emerging Canadian artists.

GALA ADMISSION PRICE: \$50 PER PERSON

WORKSHOPS LED BY A WINE-TASTING EXPERT

MEDITERRANEAN SELECTIONS \$25/PERSON CALIFORNIA SELECTIONS \$35/PERSON

TO ORDER TICKETS, CALL 519.746.1882

LAYERS - PETER SLOAN



Peter Sloan, detail from Niche, hydrostone plaster / 48"x12", 2005

Peter Sloan's work is often related to the natural world. Having been an amateur naturalist all of his life, the influence of that ongoing interest was evident in the work in this exhibition. Mankind's spiritual relationship with the earth and the art of primitive cultures have always held a mysterious fascination for him. In these recent works in clay and plaster, Sloan has created icons in celebration of man's relationship with nature.

A graduate of the Ontario College of Art and Design, Sloan frequently works in different mediums such as plaster, clay, wax, bronze and silver. The mediums he uses, and the techniques, often over-lap with one another - the process to create one type of work becomes a “finished” work on its own. Developing skills and techniques in working with one kind of material invariably helps in a wide variety of ways in working with others.

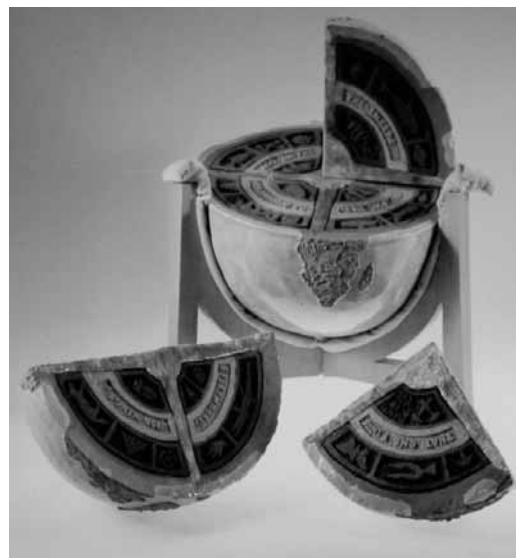
PERMANENT COLLECTION PROFILE

Earth Sections I-IV / Lorne Beug

Earth Sections I-IV, a wonderful, whimsical and mysterious creation, is basically a globe - 12" in diameter - dissected into four parts.

The edges of each segment are formed by brightly glazed lava streams radiating from the core. The sedimentary strata are arranged concentrically and stand as concrete manifestations of layers of time. These coloured clay bands are carved into friezes representing a catalogue of natural forms and the human attempt to order them into systems of knowledge. The earth is seen as a sort of “maxi-brain” similar to Teilhard de Chardin's concept of the noosphere, and sandwiched between the layers is a rough-hewn ring of poetry, a quotation from Novalis.

Lorne Beug, born in 1948 and living in Regina, Saskatchewan, received his BA at the University of Regina in Anthropology and Psychology (1969), studied Fine Arts at the University of Regina with Joe Fafard and Marilyn Levine (1972-73), and attended Emma Lake Workshop (ceramics) (1976). He also studied *l'art brut* and “fantastic architecture” in Europe assisted by Canada Council. His work has been exhibited in Canada and the USA and is in prestigious public collections including the Mendel Gallery, Dunlop Art Gallery and the Canada Council Art Bank.



Lorne Beug, Earth Sections I-IV, red, brown and white low fire clay, handbuilt, carved and assembled, wooden stand / 22.5x28 dia., 1977-78. Indusmin Collection, on loan from Unimin Canada Ltd.

EDUCATION PROGRAMS

For information on education programs, contact Sheila McMath, Educator ext. 221 / sheila@canadianclayandglass.ca

SCHOOL PROGRAM Offered from September to June every year!

Let your child's teacher know about this opportunity for a fun-filled field trip. Elementary school classes receive a guided tour of the current exhibition followed by a hands-on clay workshop taught by a professional artist. Projects are fired in the on-site kiln and students receive their creations two weeks after their visit. Available from Tuesday to Friday. Pre-registration is required. Book now while space is still available!

CHILDREN'S MARCH BREAK ART ACTIVITIES

March 13 -17 from 9:00 a.m. to 3:30 p.m. Ages 7-11.

Extended care available 8:15-9:00 a.m. and 3:30-4:30 p.m.

PRICE: Members: \$140.00 + gst; Non-Member: \$175.00 + gst (clay, materials and firing included)

A full-day, full-week program, with a variety of art activities for the young art-lover, will be taught by Sheila McMath and guest artists. Activities will include clay sculpture, glazing techniques, painting, origami, puppetry and mosaics. Drama games and outdoor activities as well! Children must bring their own lunch/snacks as well as warm clothes for outdoor activities.

Contact the gallery for registration forms.

ADULT SCULPTURE CLASS - GARDEN SCULPTURE

Thursday Evenings: 7:00-9:30 p.m.; Six Week Course; February 16 - March 23

PRICE: Members: \$80.00 + gst; Non-Members: \$115.00 + gst

Instructor, Stephen Hawes, will provide guidance and technical support in the creation of clay objects for the garden. Suitable for both beginners and experienced artists.

SUNDAY PLAY WITH CLAY!

January 8 & 22, February 5 & 19, and March 5 from 1-4 p.m.

PRICE: \$5 per person

Spend an afternoon with instructor, Soheila Esfahani, learning the basic techniques of clay sculpture. Projects are designed for pre-schoolers, children, youth and adults. Family members can work collaboratively on one creation or feel free to make their own. Technical guidance, project samples, and many ideas for creative artworks will be provided. Visit often and get muddy!

Sorry, no group reservations.

DONOR PROFILE

“It was nothing short of an enthralling experience. On Sunday at Emmanuel United Church in Waterloo, the Nathaniel Dett Chorale performed a concert called a Resounding Night of Voice, and it was all that and more.” - Harry Currie, The Record

The Nathaniel Dett Chorale, Canada's first professional choral group dedicated to Afrocentric music of all styles including classical, spiritual, gospel, jazz, folk and blues, performed a benefit concert at Emmanuel United Church to an audience of over 200 guests on October 30. The Canadian Clay & Glass Gallery is very grateful to its newest corporate supporter, Spaenaur, whose generosity enabled the Gallery to share the music of the Nathaniel Dett Chorale with the Kitchener-Waterloo community and to raise funds for the Gallery's education programs.